



Brighton 5 15/16" Frame Depth Sliding Door (French Rail)

BRIGHTON SERIES SLIDING DOOR (FRENCH RAIL)

FEATURES

- ◇ Commercial Framing System
 - 5 15/16" main frame (4 9/16" fin to interior)
- ◇ Enhanced Design
 - Solid extruded aluminum clad exterior framing: 0.078" metal thickness
 - Radiatta pine interior
 - 8 9/16" bottom stile on panels
 - Extended drip cap for water infiltration protection
 - Fiberglass sill
 - Dual-seal frame weather-strip at panel face and edge
 - Nailing fin
- ◇ Glazing
 - 3/4" insulating glass with warm-edge spacer
 - Low-E with argon gas
- ◇ Hardware
 - Heavy-duty ball-bearing rollers make operation easy and smooth
 - Truth Signature Hardware with safe locking system
- ◇ Screen
 - Extruded aluminum screen frame with BetterVue™ mesh with WaterShed® technology

BENEFITS

- ◇ The capacity to match exterior colors for unique project facades
- ◇ The capacity to match interior colors for unique decor
- ◇ The ability to facilitate custom sizes for taller and wider door openings

OPTIONS

- ◇ Available Configurations
 - Fixed-Active
 - Active-Fixed
 - Fixed-Active-Active-Fixed
 - Sidelites
 - Transoms
- ◇ Muntin Choices
 - Internal, wood removable or simulated divided lites available
- ◇ Screen
 - Extruded aluminum screen frame with aluminum wire mesh
 - Extruded aluminum screen frame with sunscreen mesh
 - Extruded aluminum screen frame with stainless steel 0.009" thickness mesh
- ◇ Glazing
 - Capillary tubes
 - Wide variety of glazing, tinting and thickness options
- ◇ Panning & Trim Choices
 - Wide variety of trim available
- ◇ Mulling
 - Wide variety of structural mulls

PERFORMANCE

- ◇ Structural & Thermal (test reports or thermal simulations available upon request)

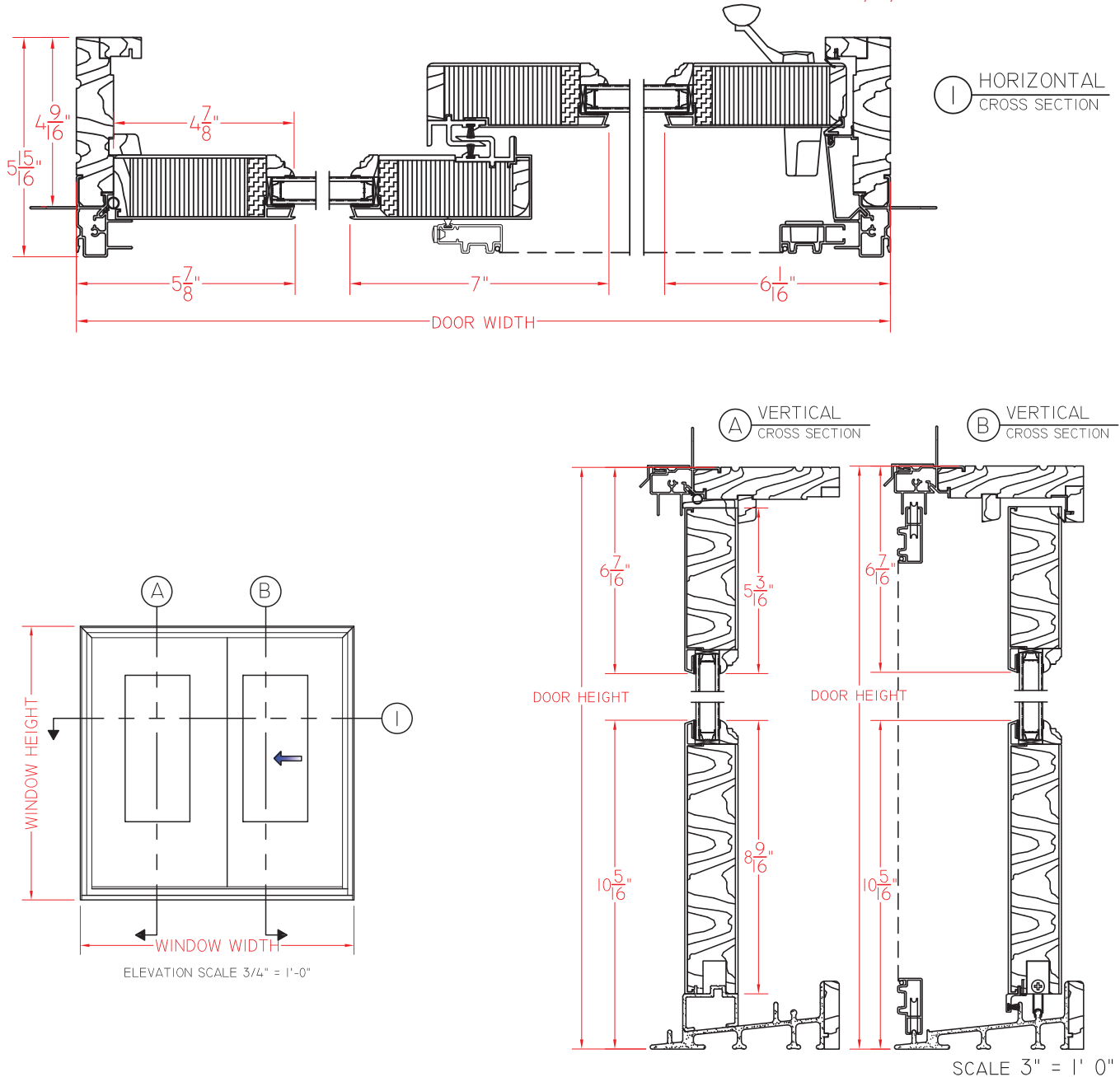
Model	Brighton French Rail Sliding Door
	Active-Fixed
AAMA/WDMA/CSA 101/I.S.2/A440-08 Rating	R-50
Structural Load P.S.F.	75.19
Air at 50 MPH (cfm/ft ²)	0.17
Water (No Penetration) P.S.F.	7.52
U-Value (ranges based on multiple Low-E/Argon combinations)	0.28 - 0.32
SHGC (ranges based on multiple Low-E/Argon combinations)	0.10 - 0.35
Test size	72" x 96"

Our products are tested to the standards of and certified by some of the foremost organizations in the fenestration industry.



BRIGHTON SERIES SLIDING DOOR (2-PANEL FRENCH RAIL)

This document contains confidential and proprietary information intended for the private use of Quaker.
© 2018 Quaker Window Products Co., INC. All rights reserved.
Quaker reserves the right to change any/all designs without notice. Due to periodic re-certification requirements, result shown may vary.

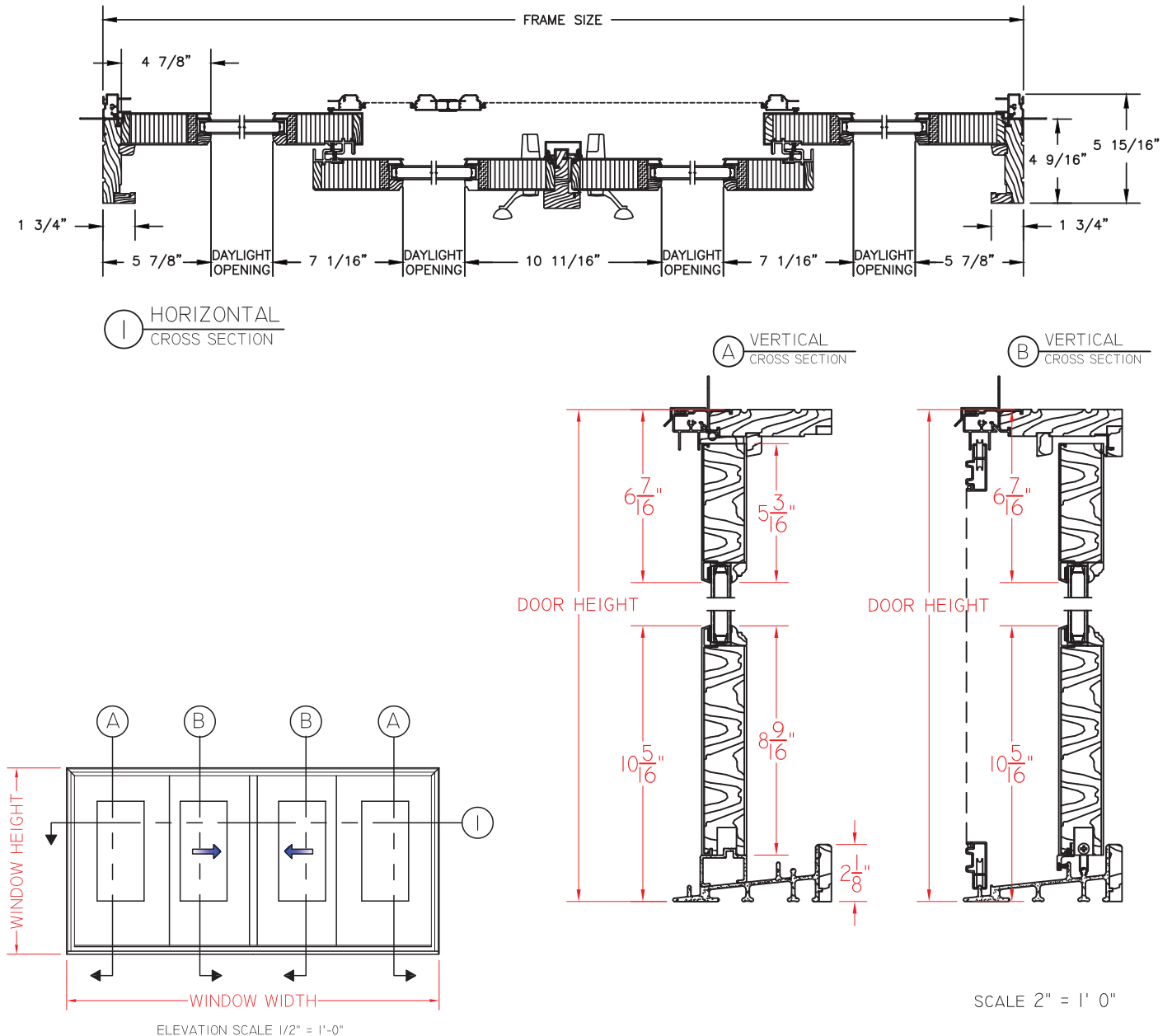


Our products are tested to the standards of and certified by some of the foremost organizations in the fenestration industry.

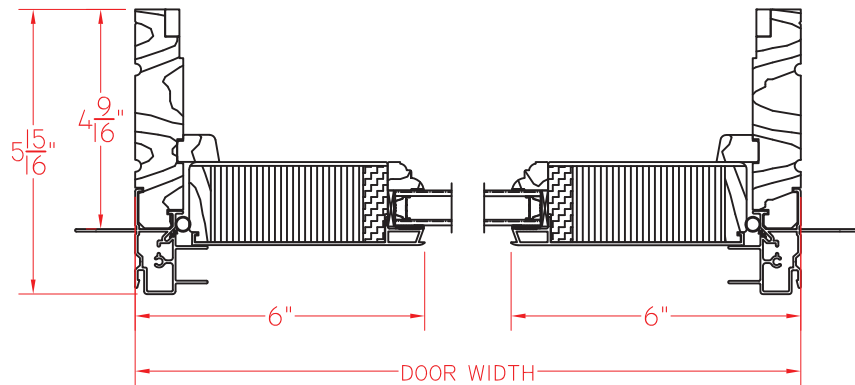


BRIGHTON SERIES SLIDING DOOR (4-PANEL FRENCH RAIL)

This document contains confidential and proprietary information intended for the private use of Quaker.
© 2018 Quaker Window Products Co., INC. All rights reserved.
Quaker reserves the right to change any/all designs without notice. Due to periodic re-certification requirements, result shown may vary.

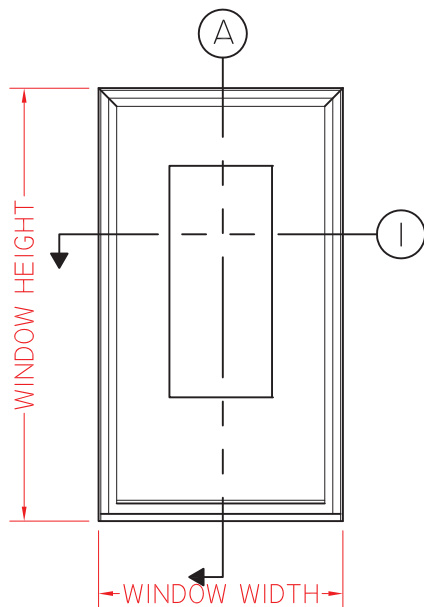


BRIGHTON SERIES SLIDING DOOR (SIDELITE FRENCH RAIL)

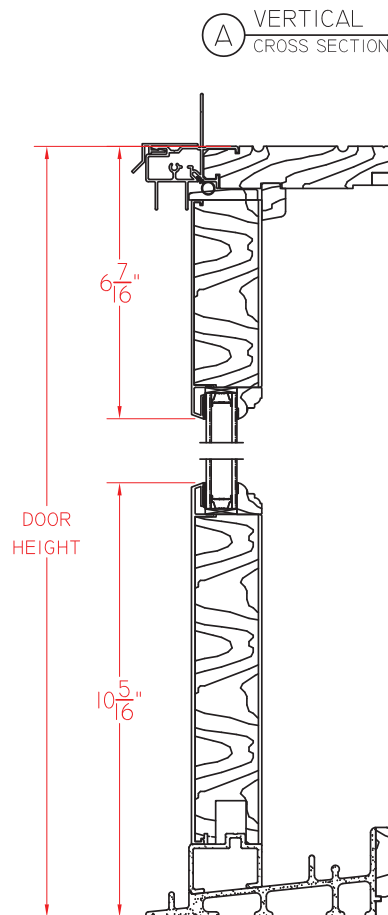


① HORIZONTAL
CROSS SECTION

This document contains confidential and proprietary information intended for the private use of Quaker.
© 2018 Quaker Window Products Co., INC. All rights reserved.
Quaker reserves the right to change any/all designs without notice. Due to periodic re-certification requirements, result shown may vary.



ELEVATION SCALE 3/4" = 1'-0"



Ⓐ VERTICAL
CROSS SECTION

SCALE 3" = 1' 0"

Our products are tested to the standards of and certified by some of the foremost organizations in the fenestration industry.

